

100 MASTERPIECES

of Japanese Bamboo Art



M
I
N
G
E
I





IIZUKA RŌKANSAI (1890-1958)
Minomushi (Bagworm)
Circa 1940-1955
Susudake (smoked bamboo)
16 x 13,5 x 49 (h) cm

Signed: *Rōkansai saku* (Made by Rōkansai)
Seal: *Rōkansai*
Tomobako & otoshi
Furoshiki cloth which is inscribed "Rōkansai"
Hakogaki: *Hanakago Minomushi Rōkansai saku*, with seal *Rōkansai*
(Flower basket named Bagworm, made by Rōkansai, with seal *Rōkansai*)
Hexagonal plaiting (variant), twining and knotting



IIZUKA RŌKANSAI
(1890-1958)
Teitei (Towering Loftiness)
Circa 1927-1934
Madake bamboo
11 x 11 x 52.5 (h) cm

Signed: *Rōkansai saku* (Made by Rōkansai)
Seal: Rōkansai
Tomobako & otoshi
Hakogaki: *Hanakago, Mei Teitei, Rōkansai saku*, with seal Rōkansai
(Flower basket named *Towering Loftiness*, made by Rōkansai, with seal Rōkansai)
琅环斋 the three kanji characters « *Ro/Kan/Sai* », distinctly interlinked, were used between 1927 to 1934.
Hexagonal plaiting (variant), twining and wrapping



IIZUKA RŌKANSAI (1890-1958)
Morikago Nanpū (Southern Wind)
Circa 1940-1955
Susudake (smoked bamboo)
43 x 27,5 x 9 (h) cm

Signed: Rōkansai saku (Made by Rōkansai)
Seal: Rōkansai
Tomobako & otoshi
Hakogaki: *Hanakago Nanpū*, Rōkansai saku, with seal Rōkansai
(Flower basket named *Southern Wind*, made by Rōkansai, with seal Rōkansai)
Square plaiting (variant), twining and knotting



IIZUKA RŌKANSAI (1890-1958)

Musubi kakehanakago

Hanging flower basket named "knot"

Circa 1926-1958

Mōsōchiku bamboo,
wisteria and lacquer

10.5 x 8 x 30 (h) cm

Signed: Rōkansai saku (Made by Rōkansai)

Seal: Rōkansai

Tomobako & otoshi

Hakogaki: Kakehanakago (hanging flower vase) & Musubi (knot)

Exhibited at the Quai Branly - Jacques Chirac Museum, 2018, in
"Fendre l'Air, Art of Bamboo in Japan" and published in the
catalogue



IIZUKA RŌKANSAI (1890-1958)

Hanakago

Handled tall bamboo flower basket
with legs

Circa 1940 -1958

Hōbichiku bamboo and rattan

18 x 17 x 61 (h) cm

Signed: Rōkansai saku (Made by Rōkansai)

Seal: N/A

Awasebako & otoshi

Hakogaki: N/A

Square plaiting



IIZUKA RŌKANSAI (1890-1958)
Hatsuka hanakago
Handled bamboo flower basket
Circa 1927 - 1930
Hōbichiku bamboo and rattan
24.5 x 23.5 x 31 (h) cm

Signed: Rōkansai saku (Made by Rōkansai)
Seal: Rokansai
Tomobako & otoshi
Hakogaki: Hanakago Mei hatsuka, Rokansai saku
(A bamboo basket, entitled 20 days/ 20th day, made by Rokansai)
Yotsume-ami, Ajiro-ami, Gozame-ami [Square plaiting, twill plaiting
and mat plaiting]
The title of the basket is Hatsuka, which means 20 days or the 20th
day. Its exact meaning intended by the artist is unknown, but it is
possible that it took Rokansai 20 days to complete creating this
intricate Karamono-style basket.



IIZUKA RŌKANSAI (1890-1958)

Magaki hanakago

Handled bamboo flower basket named
“Magaki” (Rustic woven fence)

Circa 1927 - 1930

Shiratake (bleached bamboo) and rattan

26 x 25 x 43.5 (h) cm

Signed: Rōkansai saku (Made by Rōkansai)
Seal : Rokansai (A three-interlocking-rings seal)
Tomobako & otoshi (bleached white bamboo)
Hakogaki: Hanakago
Magaki (Rustic woven fence)
Rokansai saku [Made by Rokasai]
Loose open square plaiting (arame yotsume ami)



IIZUKA RŌKANSAI (1890-1958)
Senjyō kake-hanakago
Hanging bamboo basket named
“thousand lines”
Circa 1940-1955
Madake bamboo and rattan
15 x 10 x 19 (h) cm

Signed: Rōkansai saku (Made by Rōkansai)
Seal: N/A
Shikibako (box authenticated & signed by the granddaughter of the
artist, Iizuka Mari) & *otoshi*
Senjyō (thousand lines) and yotsume-ami weave base



IIZUKA HŌSAI II

(1872-1934)

Kakkomi fukumi (winnowing scoop named Raking-in)

“Raking in Victory and Happiness” as the artist’s

hakogaki says

Shira-sabidake (white bamboo)

37 x 33 x 6 (h) cm

Signed: Hōsai

Circa 1930

Iizuka Kikuji succeeds as Hōsai II in 1916, and the hand-writing on the *hakogaki* demonstrates his mature calligraphic style and his wit in playing with pun words.

Tomobako

Hakogaki: Kakkomi (Raking-in) and *Hōsai sanjin saku kore* (Hōsai made this, the mountain man (*sanjin*))

A paper label is placed on the side of the box:

« *Dainijuyongo, Shira-sabidake, Mi, kashibon* » (Number 24, White bamboo, Winnowing Scoop, a tray for sweets)

Note: The hakogaki title is written in rebus, a puzzle and pun with words. The three kanji characters chosen by the artist are 勝幸箕 - “Katsu (Victory)”, “Ko (Happiness)” and

“*Mi* (A sieve scoop)” which are phonetically borrowed words to represent an action “*Kakkomi* (to rake in)”

This is a fortune winnowing basket (“*fukumi*” in Japanese), in this example it is used as a tray for sweets. However, the work will be equally suitable to display the first harvest of rice grains (*shinmai*) and seasonal fruits and vegetables etc. The traditional winnowing rattan & bamboo sieve baskets are used in agricultural and domestic settings to sieve grains etc.

The “*kumade*” (a raking-in broom) and “*fukumi*” (a winnowing basket) are associated with the Gods Ebisu, Daikoku, and Goddess Otakufu. *Kumade* and *fukumi* metaphorically « rake in » good luck health, safety, happiness, wealth, success etc.



IIZUKA HŌSAI II (1872-1934)

Hanakago

Susudake (smoked bamboo)

Signed: *Hōsai*

Circa 1916-1934

Awasebako

Hakogaki: N/A

21 x 20 x 50 (h) cm



IIZUKA SHŌKANSAI (1919-2004)
Ningen Kokuhō – Living National
Treasure (1983-2004)
Kakehanairi (hanging flower basket)
Shiratake (white bamboo)
7.5 x 7.5 x 29 (h) cm

Signed: *Shōkansai saku* (made by Shōkansai)
Seal: *Shōkansai*
Tomobako & otoshi
Hakogaki: *Kake-hanakago, Shōkansai saku* with seal *Shōkansai* (A
hanging flower basket, made by Shōkansai, with seal Shōkansai)



IIZUKA SHŌKANSAI (1919-2004)
Ningen Kokuhō – Living National
Treasure (1983-2004)
Mimitsuki Kake-hanakago (hanging flower
basket with ear-shaped-handles)
Madake bamboo & lacquer
16 x 16 x 23 (h) cm

Signed: *Shōkansai saku* [Made by *Shōkansai*]
Seal: *Shōkansai*
Tomobako & otoshi
Hakogaki: *Mimitsuki kake-hanakago, Shōkansai saku with seal*
Shōkansai (hanging flower basket with ear-shaped-handles, made
by *Shōkansai*, with seal *Shōkansai*)
Kawari yotsume and yotsume-hishi tsunagi ami
With a paper label on the box: *Mimitsuki hanakago*



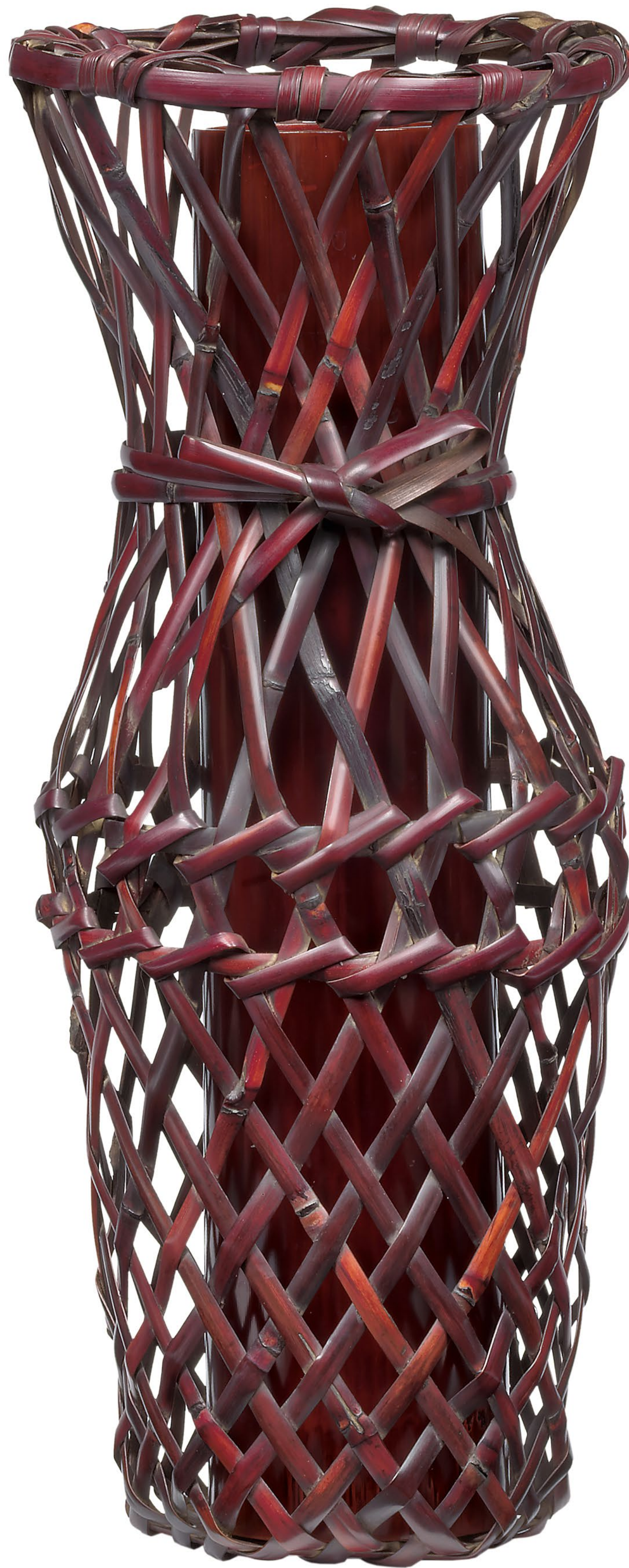
IIZUKA SHŌKANSAI (1919-2004)
Ningen Kokuhō – Living National
Treasure (1983-2004)
Kakehanakago (hanging flower basket)
Shira-sabidake bamboo (white bamboo)
12 x 11 x 24 (h) cm

Signed: *Shōkansai saku* (made by Shōkansai)
Shikibako (new box signed by Mari Iizuka, daughter of Shōkansai) &
otoshi
Hishi yotsume (diamond pattern) and transformational *mutsume*
(hexagonal weave)



IIZUKA SHŌKANSAI (1919-2004)
Ningen Kokuhō – Living National
Treasure (1983-2004)
Yadokari hanakago (hanging
flower basket named “hermit-crab”)
Shirasabidake (white bamboo)
Circa 1980-2000
21 x 15 x 15.5 (h) cm

Signed: *Shōkansai saku* (made by Shōkansai)
Shikibako (new box signed by Mari Iizuka, daughter of Shōkansai) &
otoshi
Seikai-ami (wave-like design of *Seigaiha**)
***Seigaiha** means “waves of the blue sea”. In ancient times, this
Japanese pattern was used to represent oceans and seas on
ancient maps. The **seigaiha** pattern symbolizes the calm sea, quiet
strength and good fortune.



IIZUKA SHŌKANSAI (1919-2004)
Ningen Kokuhō – Living National
Treasure (1983-2004)
Mei jōfū hanakago (flower basket name
“Merciful wind” or “Wind with feeling
sentiments”)
Susudake (smoked bamboo)
14 x 14 x 36.5 (h) cm

Signed: Shōkansai saku
Seal: Shōkansai
Tomobako & otoshi
Hakogaki: Hanakago Mei Jōfu (flower basket named Merciful wind),
Shōkansai saku (made by Shōkansai), with seal Shōkansai



IIZUKA SHŌKANSAI (1919-2004)
Ningen Kokuhō – Living National
Treasure (1983-2004)
Square *morikago*
Hōbichiku (smoked bamboo)
25.5 x 24.5 x 7 (h) cm

Signed: *Shōkansai saku*
Seal: *Shōkansai*
Tomobako & otoshi
Hakogaki: ????

Ex-collection Stéphane Martin (former President of the Quai Branly-
Jacques Chirac Museum)



MATSUMOTO HAFŪ (1952)
Tsubushidake hanakago
Bamboo madake and rattan
2018
Tomobako & otoshi
73 x 60 x 45 (h) cm

Exhibited musée national des arts asiatiques - Guimet (MNAAG Paris),
October 2020-January 2021, in «Mingei Bamboo Prize», First Edition



MATSUMOTO HAFŪ (1952)
Rin hanakago (Stand-up)
Bamboo madake and rattan
2018
Tomobako & otoshi
21 x 21 x 45 (h) cm



NAKATA KINTSEKI (1902-1959)
Nakata Kinseki (1902-1959)
Hanakago (Flower basket with handle)
Madake bamboo and rattan
19 x 19 x 40 (h) cm

Signed: Kinseki
No box with otoshi
Yotsume-ami [square plaiting]
Nakata Kinseki studied under Iizuka Rōkansai (1890-1958)



YOKOTA HŌSAI (MINESAI) (1899-1975)

Nakata Kinseki (1902-1959)

Hanakago (Flower basket with handle)

*Susudake (smoked bamboo), madake
and rattan*

17 x 15.5 x 42 (h) cm

Signed: Hōsai saku/ Minesai saku (Made by Hōsai/ Minesai)
Kiribako (modern box) with otoshi



YOKOTA HŌSAI (MINESAI) (1899-1975)
Sumitori (charcoal basket)
Madake bamboo, rattan, washi paper,
and lacquer
24 x 24 x 13 (h) cm

Signed: *Hosai saku/ Minesai saku* (Made by *Hosai/ Minesai*)
Seal: *Hosai/ Minesai*.
Tomobako
Hakogaki: *Sumitori* (charcoal container), *Hosai/ Minesai*, with his *kao*
Ajiro-ami (twill plaiting)



ICHIHARA KAUNSAI (1916-1995)
Sumitori with lacquer lining (charcoal
basket)
Madake bamboo & lacquer
30 x 30 x 10 (h) cm

Signed: *Kaunsai saku* (Made by Kaunsai)
Seal: *Kaunsai*
Tomobako and furoshiki cloth signed "Kaunsai" with seal "Kaunsai"
Hakogaki: *Orikaeshi sumitori*, *Kaunsai* with seal *Kaunsai* (charcoal
container with lacquer lining, *Kaunsai*, with seal *Kaunsai*)
Herringbone twill plaiting (a variant of *ajiro-ami*)
Just after 1989 (Heisei 1st year)



YOKOTA HŌSAI (MINESAI) (1899-1975)
Kakehanaire (hanging flower basket)
15 x 15 x 25 (h) cm

Signed: Hōsai saku [made by Hōsai]
Modern box with *otoshi*



BUSEKI SUIKOU (born 1958)
Tabane-ami kijuu hanakago (flower basket
with bundled plaiting)
Madake bamboo & rattan
2022
24.5 x 25.5 x 33 (h) cm

Signed: Buseki
Seal: Buseki
Tomobako & otoshi
Studied under grandfather Suishin and father Suigetsu and later
under Shōkansai



BUSEKI SUIKOU (born 1958)
Funagata hanakago (flower basket boat-shaped)
Susudake (smoked bamboo)
2022
66.5 x 14.5 x 12.5 (h) cm

Signed: Buseki - Seal: Buseki
Tomobako & otoshi



IIDA SEISEKI (1929- 2014)
Asatsuyu hanakago (flower basket named
“morning dew”)
Madake bamboo
30 x 30 x 21 (h) cm

Signed: *Seiseki saku* (made by Seiseki)
Yatara-ami: a method of plaiting that is randomly inserted. Most
importantly, the base is firmly and evenly woven.
Tomobako & otoshi



HAYAKAWA SHŌKOSAI III (1864-1922)
Mizore-gumu hanakago (flower basket in
the *mizore-gumi* (free style), with handle)
Dated: Taishō 7 (1918)
Susudake (smoked bamboo)
26.6 x 26.1 x 55.8 (h) cm

Signed: *Sansei Shōkosai zo* (Made by Shōkosai III)
Seal: *Sansei Shōkosai* (Shōkosai III)
Nijubako (double storage boxes) & *otoshi*
Hakogaki: *Teiryō Daimin Mizore-gumi hanakago, Taishō tsuchinoe-
uma shunjitsu, Sansei Shōkosai zo, with the seal Sansei Shōkosai* (A
bamboo basket with handle, constructed in the *mizore-gumi*, made
on a spring day in Taishō 7 (1918), made by Shōkosai III, with the seal
Shōkosai III)
Mizore-gumi (free style variant of square plaiting)



HAYAKAWA SHŌKOSAI IV (1902-1975)
Tsunogata kakehanakago (A horn-shaped
hanging bamboo flower basket)

Dated: 1961

Madake bamboo

9.8 x 10.5 x 31.2 (h) cm

Signed: *Shōkosai zo* [Made by Shokosai]

Seal: *Yonsei Shōkosai* [Shokōsai IV]

Tomobako & otoshi

Hakogaki: Ushidoshi ni chinamite tsunogata kakehanakago, Shōkosai zo, with the seal Yonsei Shōkosai (A horn-shaped hanging bamboo flower basket, created for celebrating the year of the Ox)

Yotsume-ami (Open square plaiting)



HAYAKAWA SHŌKOSAI IV (1902-1975)
Teiryō morimono-kago (tray-basket with handle)
Dated: Shōwa 3 (1928)
Madake bamboo and tennendake (natural bamboo) for the handle
38 × 36.9 × 25.8 (h) cm

Signed: Yonsei Shōkosai zo (made by Shōkosai IV) - Seal: Shōkosai
Tomobako-Hakogaki: Showa tsuchinoe-tatsu chushun (mid-spring in the year of Tsuchinoe-tatsu of the Showa period - Shōwa 3 - 1928)
Yostume-ami (square plaiting) and *ajiro-ami* (twill plaiting)



TANABE CHIKUUNSAI I (1877-1937)
Funagata mori hanakago (boat-shaped
flower basket)
Madake bamboo and copper
39 x 20 x 25 (h) cm

Signed: *Chikuunsai kore wo tsukuru* (made by Chikuunsai)
Tomobako & otoshi
*Asanoha-ami**

Asanoha (麻の葉) means “hemp leaves”. This star or hexagon motif evokes this hardy plant, which grows straight and fast. And so it symbolizes a good growth, vigor and resistance. And by extension, it augurs prosperity



TANABE CHIKUUNSAI I

(1877-1937)

Karamono yuri-gata hanakago

(Chinese style flower basket
lily-shaped)

Madake bamboo, rattan & lacquer

20 x 18.6 x 46.5 (h) cm

Signed: *Chikuunsai zō kore* (Chikuunsai made this)

Seals: "Ta tsune no in" (The seal of Tanabe Tsuneo*) and "Chikuunsai"
Tomobako & otoshi

Hakogaki: *Karamono utsushi yuri-gata hanakago* (Chinese style flower
basket lily-shaped) with two seals, *Kaifu-nansō***, *Chikuunsai zō*
kore with two seals "Ta tsune no in" (The seal of Tanabe Tsuneo) and
Chikuunsai)

***Tsuneo (常雄) is the given name of Tanabe Chikunsai I**

** *Kaifu-nansō* "A House/ Studio Facing South" is a literal translation
but the word might read "Minami no shō" which is an area in Sakai
City, south of Osaka City, where the artist's studio stood.



TANABE CHIKUUNSAI I (1877-1937)
Tsubogata hanakago (jar-shaped flower
basket)

ca. 1930

Kanchiku winter bamboo
(*Chimonobambusa marmorea*)

22 x 21 x 54 (h) cm

Signed: Chikuunsai zo kore (made by Chikuunsai)

Seal: Chikuunsai

Tomobako & otoshi

Hakogaki: *Kanchiku tsubogata hanakago* (A jar-shaped flower
basket made by C. marmorea) and Chikuunsai zo kore (made by
Chikuunsai)



TANABE CHIKUUNSAI I (1877-1937)
Ryū-Rikyō tsuri-hanakago (hanging flower
basket in Ryū-Rikyō style)
Ca; 1930'
Susudake (smoked bamboo), rattan and
copper
36.5 x 36.5 x 29 (h) cm

Signed: *Chikuunsai zo kore* [This is made by Chikuunsai]
Seal: *Chikuunsai*
Tomobako & otoshi
Hakogaki: *Ryū-Rikyō tsuri-hanakago* (hanging flower basket in Ryū-
Rikyō style) and *Chikuunsai zo kore* (made by Chikuunsai)
Mat weaving and *sensuji* weaving (a thousand-line construction),
knotting, wrapping



TANABE CHIKUUNSAI I (1877-1937)
Ryū-Rikyō tsuri-hanakago (hanging flower basket in Ryū-Rikyō style)
Dated: 1926
Susudake (smoked bamboo), rattan and copper
36.6 x 36.6 x 28.7 (h) cm

Signed: *Chikuunsai zo kore* [This is made by Chikuunsai]
Seal: *Chikuunsai*

Tomobako & 2 otoshi - Hakogaki: Ryū-Rikyō shiki tsuri-hanakago (hanging flower basket in Ryū-Rikyō style) and *Chikuunsai zo kore* (made by Chikuunsai)- *Taishō hinoe-tora shoshun, Kaifu nanso, Chikuunsai zo kore*, with seal *Chikuunsai* (made by Chikuunsai, early spring in the year of Taisho 15 (1926), at the Kaifu Nansho studio, (Sakai area, south of Osaka))

Matsuba-ami [pine needle plaiting] and *kikko-ami* [hexagonal plaiting], *tessen-ami* (Clematis plaiting)], knotting, wrapping, braiding

For a very similar basket, see the Lloyd Costen Collection, Asian Art Museum in San Francisco



TANABE CHIKUUNSAI I (1877-1937)
Hanakago (bamboo flower basket)
 Circa 1910-1937 (Chikuunsai I
 moved to Sakai in 1910)
Susudake (smoked bamboo), *tennen-dake*
 (natural bamboo for the handle)
 and rattan
 21.2 × 19.7 × 39.4 (h) cm

Signed: *Chikuunsai zo* (made by Chikuunsai)
 Seals: "Ta-tsune-no-in (*Denjo-no-in*)" (The seal of Tanabe Tsuneo
 田辺常雄) - Tsuneo 常雄 is the given name of Tanabe Chikuunsai I, and
 "Chikuunsai"
 Tomobako & otoshi - *Hakogaki*: *Tennendake te aioi-ami hanakago*
 (Natural bamboo, a bamboo flower basket with a handle plaited
 in the Aioi-weaving) Note: "Aioi" is wedded pines (相生の松 *aioi no*
matsu), which are paired pine trees that, according to Takasago
 and Suminoe legends, will remain together for eternity.
Kaifu nansho Chikuunsai zo kore (made by Chikuunsai at the Nansho
 studio in Sakai, Osaka)
Aioi-ami (twin pines of Takasago and Suminoe legend plaiting)



TANABE CHIKUUNSAI I (1877-1937)
Oishiki hanakago (bamboo flower basket
in the shape of a back-pack)
Circa 1910-1937
Kinmei-dake bamboo (*Sasa kurilensis*)
and rattan
23.3 × 22.5 × 32 (h) cm

Signed: *Chikuunsai zo* (made by Chikuunsai)

Seal: *Chikuunsai*

Tomobako & otoshi

Hakogaki: *Kimmei-dake oi-shiki hanakago* (*kinmei-dake* bamboo, a bamboo flower basket in the shape of a back-pack, *Kaifu Nansho Chikuunsai zo kore* (This is made by Chikuunsai at the Nansho studio, Sakai, Osaka))

Kagome-ami (tri-hexagonal basket plaiting)

Note: *Oibako* was carried on shoulder of Edo period Yamabushi monks for transporting personal and ritual objects, also used by travelling medicine sellers.



TANABE CHIKUUNSAI I (1877-1937)
Karamono utsushi hanakago (Chinese
style bamboo flower basket)
Circa 1910-1937
Susudake (smoked bamboo), rattan
and lacquer wipe
19.2 × 16.8 × 32.2 (h) cm

Signed: Chikuunsai
Seal: Chikuunsai
Tomobako & otoshi
Hakogaki: *Karamono utsushi hanakago* (Chinese style bamboo flower
basket) and Chikuunsai
Ajiro-ami (twill plaiting)



MAEDA CHIKUBŌSAI I (1872-1950)
Takasago-i sensu kazari (fan display
stand with Takasago legend bamboo
broom and rake design)
Dated: 1942 (Shōwa 17)
Susudake (smoked bamboo) and rattan
49 x 18 x 19.3 (h) cm

Signed: *Chikubōsai*
Seal: *Chikubōsai*
Tomobako

Hakogaki: *Takasago-i sensu kazari* (fan stand with Takasago legend
bamboo broom and rake design) and *Koki 2602-nen shoto*, Koyo
Kuzenosato, *Chikubōsai* with seal *Chikubōsai* (made in the early
winter of the 2602nd year (Shōwa 17, 1942) at Kuzenosato, Koyo, by
Chikubōsai)



MAEDA CHIKUBŌSAI I (1872-1950)

Tsurukubi hanakago (crane's neck
shaped flower basket)

Susudake (smoked bamboo),
rattan and lacquer

15 x 15 x 37.8 (h) cm

Signed: *Chikubōsai zo kore* (made by Chikubosai)

Seal: *Chikubōsai*

Tomobako & otoshi

Hakogaki: *Tsurukubi hanakago* (crane's neck shaped flower basket)

and *Koyo kuzenosato, Chikubōsai*, with seal *Chikubōsai* (made by

Chikubōsai, in the village Kuse where the Imperial Sun shines)

Gozame ami (matt plaiting) and braiding



MAEDA CHIKUBŌSAI I (1872-1950)

Hanakago (flower basket with natural handle)

Dated: Taishō 12 (1923)

Susudake (smoked bamboo) and rattan

23.3 x 22.8 x 47.6 (h) cm

Signed: Chikubōsai

Seal: Chikubōsai

Tomobako (in paulownia and black persimmon) & *otoshi*

Hakogaki: Taishō juninen mizunoto-i natsubi, Chikubōsai tsukuru kore, with seal Chikubōsai (made by Chikubōsai, on a day in summer in Taishō 12 (1923), with seal Chikubōsai)

Yotsume-ami (square plaiting), *ajiro-ami* (twill plaiting) and *gozame-ami* (mat plaiting)



MAEDA CHIKUBŌSAI I (1872-1950)
Suehiro hanakago (flower basket
named “Expanding prosperity”)
Dated: Shōwa 15 (1940)
Susudake (smoked bamboo) and rattan
15 x 15 x 42.2 (h) cm

Signed: *Chikubōsai* - Seal: *Chikubōsai*
Tomobako & otoshi (there is a hole in the otoshi)
Hakogaki: *Suehiro* hanakago (flower basket entitled “Expanding
prosperity”) and *Koki 2600-nen aki, Koyo Kuzenosato, Chikubōsai*
with seal *Chikubōsai* (made in the autumn of the 2600th Imperial
Year
(Shōwa 15, 1940) at Kuzenosato, Koyo, by Chikubōsai)
Ajiro-ami (twill-plaiting), braiding, wrapping and knotting



MAEDA CHIKUBŌSAI I (1872-1950)
Karamono utsushi kake-hanakago
(Chinese-style hanging flower basket)
Dated: 1927 (Shōwa 2)
Furuya-take (old arrow bamboo), *madake*
bamboo and rattan
13.4 × 11.6 × 30 (h) cm

Signed: Chikubōsai - Seal: Chikubōsai
Tomobako & otoshi
Hakogaki: *Furuya-take karamono-utsushi* (Chinese-style hanging
flower basket, made with old bamboo arrows) and *Shōwa ni*
hinoto-u, fuyu no hi, Chikubōsai (Shōwa 2, in the year of the
hinoto-u, a day in winter, Chikubōsai)
Senjo-ami (one-thousand-line construction), *gozame-ami* (mat
plaiting), and *matsuba-ami* (pine-needle plaiting)



MAEDA CHIKUBŌSAI I (1872-1950)
Hanakago (flower basket with natural
bamboo handle)
Dated: 1940 (Shōwa 15)
Madake and *nemagari-dake* bamboo,
rattan and *urushi* lacquer
29.7 × 28 × 48.1(h) cm

Signed: *Chikubōsai tsukuru kore* (made by Chikubōsai)
Seal: *Chikubōsai*
Tomobako & otoshi - Hakogaki: *Hanakago* (Flower basket) and *Kigen
nisen roppyaku nen shoto, Sen'yo Kuzenosato, Chikubōsai tsukuru
kore* (This is made by Chikubōsai, Kuzenosato, Sen'yo, in the 2600th
Imperial Year (Shōwa 15, 1940)
Yotsume-ami (square plaiting) & *asanoha-ami* (hemp-leaf plaiting)



MAEDA CHIKUBŌSAI I (1872-1950)
Tennen-dake tsutsumi-gata hanakago
(flower basket with a handle made
of natural bamboo in a shape
of a hand-held drum)
Circa 1910-1930
Susudake (smoked bamboo),
tennen-dake (natural bamboo) and rattan
23,5 x 23 x 50 (h) cm

Signed: *Chikubōsai tsukuru kore* (made by Chikubōsai)
Seal: *Chikubōsai*
Tomobako & otoshi - *Hakogaki*: *Tsutsumi-gata hanakago* (A hand-held
drum shaped flower basket) and *Koyo kuze-no-sato*, *Chikubōsai*
tsukuru kore (made by Chikubōsai, in Kuze village, Koyo
("Imperial sunshine"))
Senjo-ami (thousand-line construction) and *gozame-ami*
(mat plaiting)



MAEDA CHIKUBŌSAI I (1872-1950)
Banzai hanakago (flower basket named
“Ten thousand years”, which means
“May I wish you a long life!”)
Dated: 1942 (Shōwa 17)
Susudake (smoked bamboo), rattan
and lacquer wipe
22 x 22 x 54 (h) cm

Signed: *Chikubōsai zo kore* (made by Chikubōsai)
Seal: *Chikubōsai*
Tomobako & otoshi
Hakogaki: *Banzai hanakago* (flower basket named “Ten thousand
years”, which means “May I wish you a long life!”) and *Koki nisen*
roppyaku-ni-nen, shujitsu, Sen'yo Kuzenosato, Chikubōsai zo kore
(made by Chikubōsai, to celebrate the 2602th year of the Imperial
years, on an autumn day, in village Kuze, the Sen'yo district, Osaka)
Gozame-ami (mat plaiting) and *kawari hineri yotsume-ami*
(a variation of free style twist square plaiting)



MAEDA CHIKUBŌSAI I (1872-1950)
Kake-hanakago (hanging flower basket)
Dated: Shōwa 19 (1944)
Madake bamboo and lacquer
14.5 x 14 x 24 (h) cm

Signed: *Chikubōsai*
Seal: *Chikubōsai*
Shikibako (box authenticated & signed by his son Chikubōsai II) and *otoshi*
Hakogaki: *Koki 2604-nen, haru no hi, Koyo Kuse no sato, Chikubōsai* (made on a spring day in Shōwa 19 (1944), to celebrate the 2604th Imperial Year, Chikubōsai, in the village of Kuse where the Imperial Sun shines)
Chikubōsai I was born in Kuse village, Hirai, Sakai City, Okasa.
The village name Kuse 久世 literally means “Eternal generations”



WADA WAICHISAI II (1877-1933)
Natsume-gata hanakago (flower basket
tea caddy-shaped)
Dated: Taishō 10 (1921)
Susudake (smoked bamboo)
27 x 26 x 50 (h) cm

Signed: *Waichisai zo kore* (made by Waichisai)
Seal: *Waichisai*
Tomobako & otoshi
Hakogaki: *Natsume-gata hanakago* (flower basket in a shape of a tea
caddy),
Taisho kanoto-tori, shoka, Waichisai (made by Waichisai, in the early
summer of Taishō 10 (1921), in the year of kanoto-tori)
A piece of paper on the tomobako: "No 288, flower basket, in a shape
of a tea caddy]
Open *ajiro-ami* (open twill plaiting) and twining



WADA WAICHISAI II (1877-1933)
Hanakago (flower basket with handle)
Circa 1920-1933
Madake bamboo & lacquer
24 x 24 x 46 (h) cm

Signed: *Waichisai zo kore* (made by Waichisai)
Seal: *Waichisai-saku*
Tomobako & otoshi
Hakogaki: *Hanakago* (flower basket), *Waichisai*
Variant of free style square plaiting, twining



YAMAMOTO CHIKURYŌSAI I
(1868-1945) - SHŌEN AFTER 1929
Sangaku-shiki hanakago (flower basket
name "Mountain shape"*)
Circa 1929-1945
Susudake (smoked bamboo)
22 x 26.5 x 36.5 (h) cm

No signature, no seal
Tomobako without otoshi
Hakogaki: *Susudake, Sangaku-shiki, hanakago, Shōen saku*
(*Susudake* smoked bamboo flower basket, in a shape of a mountain,
made by Shōen)
Kagome-ami (hexagonal plaiting) and twining



YAMAMOTO CHIKURYŌSAI I
(1868-1945) - SHŌEN AFTER 1929
Banzai hanakago (flower basket named
“Ten thousand years” also “Long Live!”)
Dated: Shōwa 11 (1936)
Hōbichiku (Phoenix tail bamboo also
called smoked *nemagaridake* bamboo)
25.4 x 25 x 34 (h) cm

Signed: Shoen zo (made by Shōen) - Seals: Yama Yūsei in and Shōen
Tomobako & otoshi- Hakogaki: *Banzai hanakago* (flower basket named
“Ten thousand years”, also “Long Live!”), *Shōwa hinoe-ne natsu*,
Shoen zo (Summer of Shōwa 11 (1936) Shōen)
Kagome kikko-ami (hexagonal tortoise-shell plaiting)



YAMAMOTO CHIKURYŌSAI I
(1868-1945) - SHŌEN AFTER 1929
Jindaiji hanakago
Dated: Shōwa 15 (1940)
Hōbichiku (Phoenix tail bamboo also
called smoked nemagaridake bamboo)
30 X 30 X 32 (h) cm

Signed: *Shōen zo* (made by Shōen) - Seal: *Shōen*
Tomobako & otoshi

Hakogaki: *Jindaiji hanakago* ("jindai" means the period that gods ruled
the world before enthronement of Jinmu emperor, and ("ji"
means a road)

Made as a memorial for *Koki 2600 Imperial year* (1940) by Shōen,
near *Naniwabashi* (Naniwa bridge in Osaka)

* flower basket named from the period that gods ruled the world
before enthronement of Jinmu emperor, the legendary first
emperor of Japan (711-585 av. J.-C.) according to the *Nihon Shoki*
and *Kojiki*



YAMAMOTO CHIKURYŌSAI I (1868-
1945)
Chūgoku-fū mozō-hin hanakago (Study of a
Chinese-style floral basket)
Before 1929
Madake bamboo
42 x 29 x 90 (h) cm

Signed: *Chikuryōsai zo* (made by Chikuryōsai)
Seal: *Chikuryōsai*
Tomobako & otoshi
Hakogaki: *Chūgoku-fū mozō-hin hanakago* (模唐物華籃) Study of a
Chinese-style floral basket, (竹龍齋) *Chikuryōsai*



TANABE CHIKUUNSAI II (1910-2000)
Yamaji hanakago (flower basket named
“Mountain path”)
Circa 1944-1955
Susudake (smoked bamboo)
18.5 x 18.5 x 35.5 (h) cm

Signed: *Chikuunsai tsukuru kore* (made by Chikuunsai)
Seals: *Ta toshi no in (Denri no in)* (Seal of Ta (Tanabe) Toshi (Toshio*))
and “*Chikuunsai*”
Tomobako & otoshi - Hakogaki: *Yamaji hanakago* (flower basket
named Mountain path)- *Tekisuikyo Chikuunsai tsukuru kore*
(made by Chikuunsai at the Tekisuikyo Studio)
Kikko mutsume-ami (hexagonal tortoise-shell plaiting)
*Toshio 利雄 is the given name of Chikuunsai II (Tanabe Toshio)



TANABE CHIKUUNSAI II (1910-2000)
Sōsen hanakago (flower basket named
“double-fan”)
Circa 1944-1955
Madake bamboo, rattan and lacquer
43 x 11 x 17.5 (h) cm

Signed: *Chikuunsai zō* (made by Chikuunsai)
Seal: *Chikuunsai*
Tomobako & otoshi
Hakogaki: Sōsen hanakago (flower basket named “double-fan”)
*Tekisuikyo** / *Chikuunsai zō*
Mutsume-ami (hexagonal weaving)
***Tekisuikyo is the name of the place where Chikuunsai the second was living before and after the World War Second for evacuation. It was between 1944 and 1955, and the signature with this description makes it possible to tell the approximate date of the piece.**



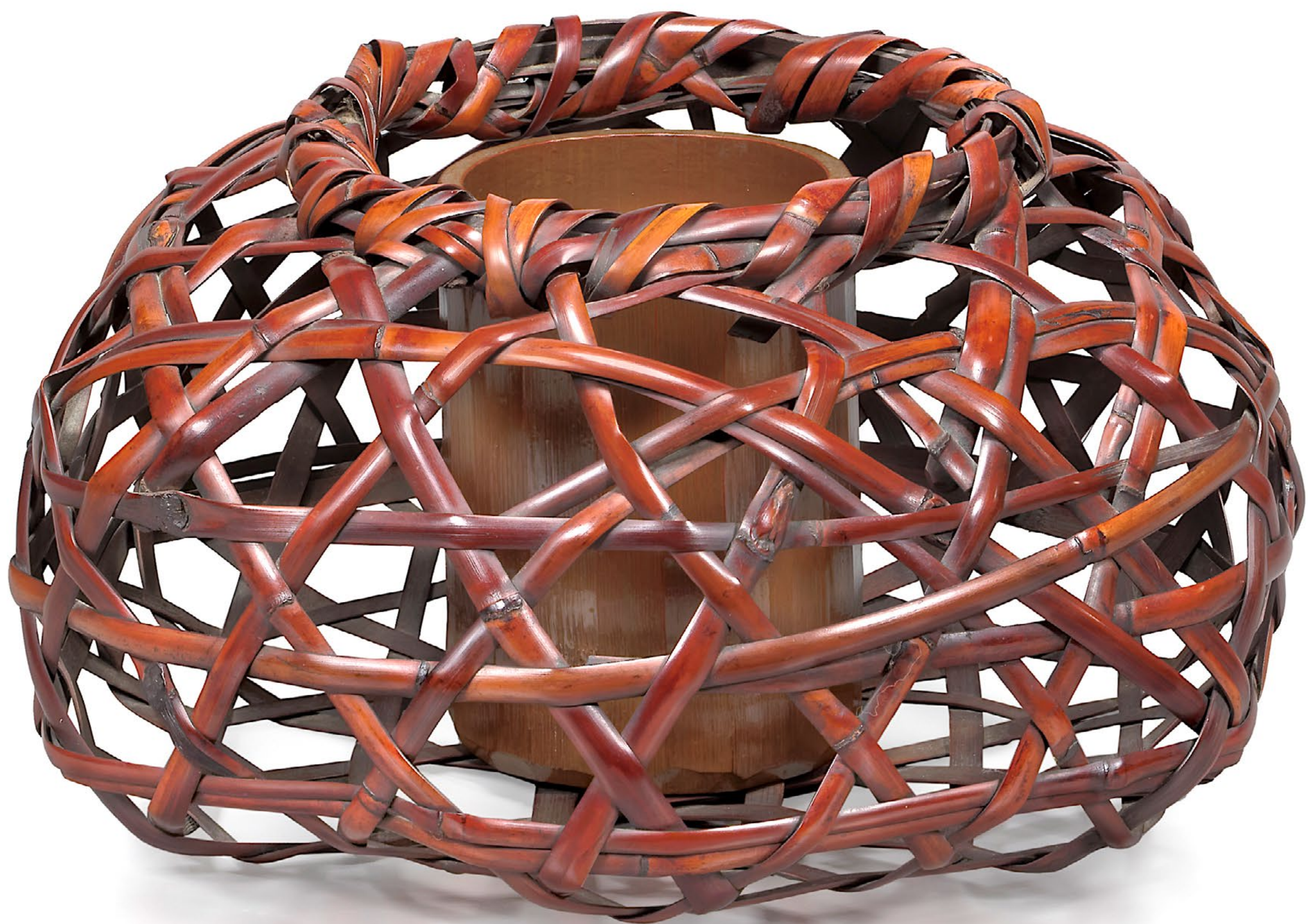
TANABE CHIKUUNSAI II (1910-2000)
Hiratsubo-gata hanakago (flower basket
shallow jar-shaped)
Circa 1980-2000
Madake bamboo, rattan and lacquer
34 x 34 x 14.5 (h) cm

Signed: *Chikuunsai zō* (made by *Chikuunsai*)
Shikibako (certificated box by Tanabe Shouchiku III)
Hakogaki: *Hiratsubo-gata* (shape of shallow jar) *hanakago*
(flower basket)
This piece was made by Chikuunsai the Second. Shouchiku
certificated. Former collection of the Tanabe family.
Gozame-ami (mat plaiting)



TANABE CHIKUUNSAI II (1910-2000)
Fūki takate tsubo-gata hanakago (flower
basket with high handle jar-shaped
named “wealth”)
Circa 1944-1955
Madake bamboo, rattan & lacquer
30 x 30 x 46 (h) cm

Signed: *Chikuunsai zō* (made by Chikuunsai)
Tomobako
Gozame-ami (mat plaiting)



TANABE CHIKUUNSAI II (1910-2000)
Kusamoe hanakago (flower basket named
“grass bud”)
Circa 1944-1955
Madake bamboo, rattan & lacquer
28 x 28 x 15.5 (h) cm

Signed: *Chikuunsai zō* (made by Chikuunsai)
Tomobako
Hakogaki: *Tekisuikyo**, *Chikuunsai kore wo tsukuru* (Chikuunsai
made this at Tekisuikyo)
Mutsume-ami (hexagonal plaiting)



TANABE CHIKUUNSAI II (1910-2000)
Tsurioki hanakago (flower basket
with a handle for hanging and placing
at the alcove (*tokonoma*))
Circa 1944-1955
Madake bamboo, rattan and lacquer
21.5 x 21.5 x 19(h) cm

Signed: *Chikuunsai zo* [Made by Chikuunsai]

Seals: *Tanabe no in* & *Chikuunsai*

Tomobako

Hakogaki: *Kikko sukashi-ami*, *hirokuchi*, *tsurioki hanakago* (variation of openwork hexagonal plaiting, for hanging and placing on tables/alcove, flower basket with wide mouth), *Tekisuikyo*, *Chikuunsai zo*.
Kikko sukashi-ami (variation of openwork hexagonal plaiting)

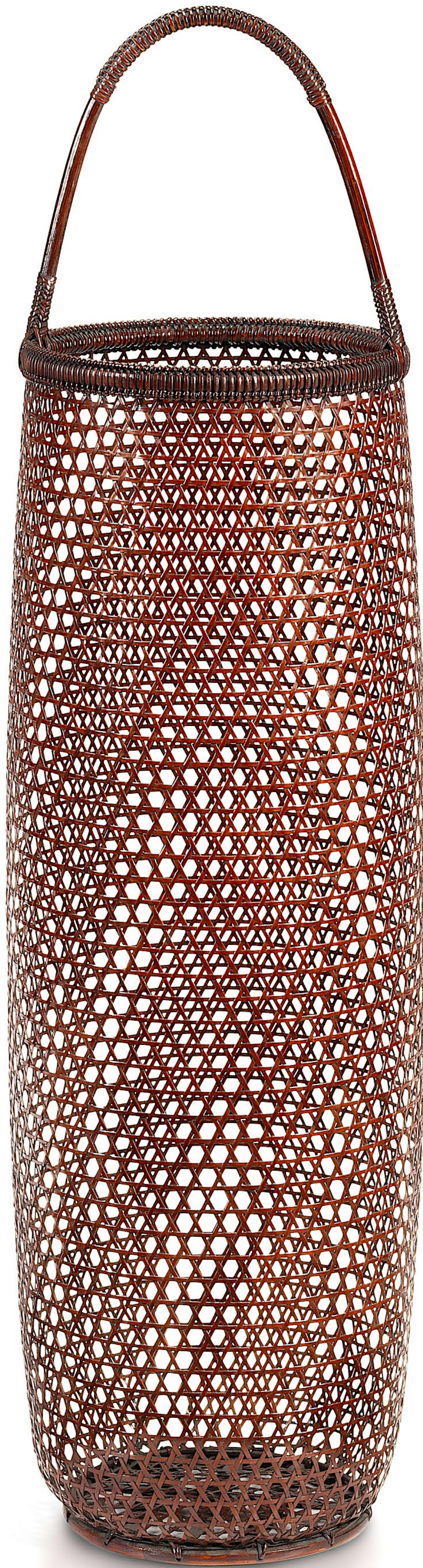
The word « 釣置 *Tsuri oki* » literally means to « hang up » and « put down ». It is a style of flower vessel with a handle with a flat base. This style looks equally good for being suspended by the handle in the air or placed on the floor, table, or alcove.



TANABE CHIKUUNSAI II (1910-2000)
Hōryō hanakago/morikago (flower basket
named "Abundant catch of Fish")

Circa 1944-1955
Hōbichiku bamboo
Signed: *Chikuunsai zō*
43 x 25 x 16 (h) cm

Seals: "Ta (Tanabe) ri (Toshio) no in" & "Chikuunsai"
Tomobako & otoshi
Hakogaki: *Hōryō hanakago hōbichiku* (Abundant catch of Fish flower
basket, *hōbichiku* bamboo)
Tekisuikyo, *Chikuunsai zo*, with seals "Ta (Tanabe) ri (Toshio) no in"
& "Chikuunsai"



TANABE CHIKUUNSAI II (1910-2000)

Tsutsugata hanakago (flower basket
tubular-shaped)

Circa 1944-1955

Madake bamboo, *yadake* arrow shaft
for handle, rattan and lacquer

12,5 x 12,5 x 45 (h) cm

Signed: *Chikuunsai zo* (made by Chikuunsai)
Retailer's seal on the tomobako: *Shōbidō, Osaka*
Shikibako & otoshi

Hakogaki: *Shōbidō, Osaka*

Kikko sukashi-ami tsutsugata, hanakago, Tekisuikyo, Chikuunsai zo,*

Osaka Shōbidō kan, with seal Shōbidō (Open hexagonal plaiting,

tubular shape, flower basket, Tekisuikyo, made by Chikuunsai,

authenticated by the Shōbidō retailer gallery, Osaka,

with seal Shōbidō)

Kikko sukashi-ami (open hexagonal plaiting) and twining



TANABE CHIKUUNSAI II (1910-2000)
Fukukai hanakago (flower basket named
“bountiful sea”)
After Shōwa 51 (1976)
Shichiku (purple bamboo)
31.5 x 29 x 12 (h) cm

Signed: Chikuunsai zo - Seals: “Ta Toshi no in (Denri no in) “(Given name: Tanabe Toshio 田辺利雄) and “Chikuunsai”
Tomobako, otoshi and furoshiki cloth with “Chikuunsai” seal
Hakogaki: *Fukukai hanakago* (flower basket named Bountiful Sea)
Arame yotsume-ami (open square plaiting, simulating silk thread weaving) and *matsuba-ami* (pine needle plaiting)



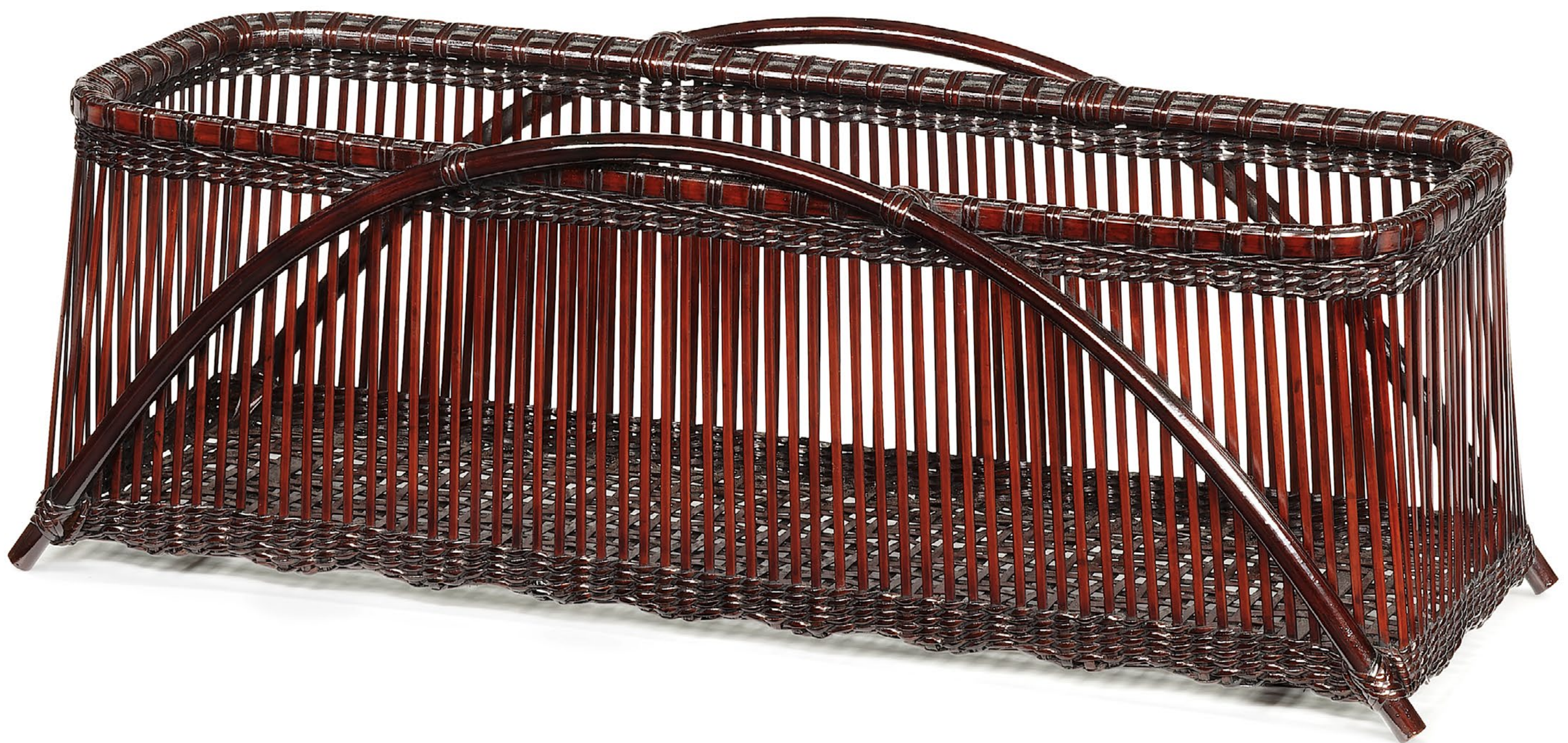
TANABE CHIKUUNSAI II (1910-2000)
Seiryū hanakago (flower basket named
“Pure stream”)
Circa 1990, at the age of 80
Shiratake (white/blond bamboo)
34.3 x 33.3 x 11.6 (h) cm

Signed: *Chikuunsai zo* (made by Chikuunsai)
Seals: “*Ta Toshi no in (Denri no in)*” & “*Chikuunsai*”
Tomobako & otoshi - Hakogaki: Seiryū hanakago, shiratake, karaito-ami (Pure stream, a flower basket, white bamboo, in “Chinese thread weaving” (“silk thread weaving”) plaiting) & *Sanju, Tekisuikyō*, with seals “*Ta Toshi no in (Denri no in)*” “*Chikuunsai*” (At the auspicious age of 80, *Tekisuikyō*)
Karaito-ami* (silk thread weaving)



TANABE CHIKUUNSAI II (1910-2000)
Tsubogata hanakago (flower basket
jar-shaped)
Circa 1944-1955
Madake bamboo, rattan and lacquer

Signed: *Chikuunsai tsukuru kore* (made by Chikuunsai)
Seals: "Ta toshi no in (Denri no in)" [Seal of Ta (Tanabe) Toshi (Toshio)]
and "Chikuunsai"
Tomobako & otoshi
Hakogaki: *Kikko sukashi tsubogata, hanakago* (hexagonal tortoise-
shell plaiting, a jar-shaped flower basket) & *Tekisuikyo, Chikuunsai*
tsukuru kore (made by Chikuunsai at the Tekisuikyo studio)
Kikko sukashi ami (open hexagonal tortoise-shell plaiting)



TANABE CHIKUUNSAI II (1910-2000)

Sono hanakago (flower basket
named "garden")

Circa 1944-1955

Madake bamboo, rattan & lacquer

36.5 x 13.8 x 13.6 (h) cm

Signed: *Chikuunsai zo* (made by *Chikuunsai*)
Seals: "Ta Toshi no in (Denri no in)" & "Chikuunsai"
Tomobako & otoshi - Hakogaki: *Sono hanakago*, *Tessuikyo*,
Chikuunsai zo



TANABE CHIKUUNSAI II
(1910-2000)
Suehiro-gata hanakago
(flower basket open fan-shaped)
Circa 1944-1955
Madake bamboo and lacquer
20.5 x 20.5 x 45.8 (h) cm

Signed: Chikuunsai zo (made by Chikuunsai)
Seals: "Ta toshi no in (Denri no in)" (Seal of Ta (Tanabe) Toshi (Toshio))
and "Chikuunsai" and "Shobido in" (Retailer by the Shobido
company)
Tomobako & otoshi
Hakogaki: Suehiro-gata, uroko-ami, wachigai-fuchi, hanakago (flower
basket, suehiro-shaped, fish-scale hexagonal plaiting, with a
design of inter-linked circles opening at the top) and Tekisuikyo,
Chikuunsai, Osaka Yodoyabashi, Shobido (made by Chikuunsai at
the Tekisuikyo Studio, the item is authenticated and retailed by the
Shobido shop, address at the Yodoyabashi district, Osaka)
Uroko-ami (hexagonal fish-scale plaiting), the rim is finished in the
wachigai (inter-linked circles opening at the top)



TANABE CHIKUUNSAI II (1910-2000)
Magaki hanakago (flower basket named
“Rustic bamboo fence”)
Circa 1944-1955
Susudake (smoked bamboo)
17.4 × 14.5 × 17.2 (h) cm

Signed: *Chikuunsai zo* [Made by Chikuunsai]
Seals: *Ta-toshi-no-in* (Denri no in) & Chikuunsai
Tomobako & otoshi
Hakogaki: *Magaki hanakago* (Rustic bamboo fence, a bamboo flower
basket) and *Tekisuikyo*, Chikuunsai zo (made by Chikuunsai
at the Tekisuikyo studio)
Senjo-ami (one-thousand-line construction) and *gozame-ami*
(mat plaiting)



IKEDA SEIRYUSAI (? - ?),
possibly Osaka, Kansai region
Teiryō hanakago (flower basket with
handle)
Circa 1920-1940
Kinmei-dake bamboo (*Sasa kurilensis* Rupr.
Kinmei)
24.5 × 22.8 × 65.5 cm

Signed: Seiryusai zo (made by Seiryusai)

Seal: Seiryusai in (made by Seiryusai)

Tomobako & otoshi

Hakogaki: Kinmei-dake, teiryō hanakago (Kinmei-dake bamboo, flower
basket with handle) and Seiryusai zo with the seal "Seiryusai in"
(made by Seiryusai, with the seal "Seal of Seiryusai")

Yotsume-ami (square plaiting)



YAMAMOTO CHIKURYŌSAI II

(1898-1976)

Banzai hanakago (flower basket named
“Ten thousand years, also, Long Live!”)

Dated: Winter 1951

Madake bamboo

21.5 x 21.5 x 46.2 (h) cm

Signed: Chikuryōsai with the kao monogram

Seal: Chikuryōsai

Tomobako & otoshi

Hakogaki: *Banzai hanakago* (Ten thousand years, also, Long live!, a
flower basket) and *Chikuryōsai tsukuru kore, toki ari kanoto-u,*
fuyu no hi (Chikuryōsai made this, on a day in winter in 1951)

Kagome kikko-ami (hexagonal tortoise-shell plaiting)



SUZUKI GENGENSAI

(1891-1950)

Hanakago (flower basket)

Susudake (smoked bamboo)

17 x 12 x 52 (h) cm

Signed: *Gengensai zo* (made by Gengensai)

Seal: *Gengensai*

Tomobako & otoshi

Hakogaki: Susudake yotsume saku hanakago (smoked bamboo, square

fence plaiting, a flower basket) & *Naniwa Gengensai zo* (made by

Gengensai in Osaka)

Yotsume saku-ami (square fence plaiting)



UEDA SHOUNSAI (1897-1990)
Hanakago (flower basket)
Dated 1931
Madake bamboo and rattan
Tomobako & otoshi
23.6 x 23.6 x 45 (h) cm



MAEDA CHIKUBŌSAI II (1917-2003)
Ningen Kokuhō – Living National
Treasure (1992-2003)
Tokkuri hanakago (flower basket, sake
bottle-shaped)
Madake bamboo and lacquer
17 x 17 x 25 (h) cm

Signed: *Chikubōsai saku* (made by Chikubōsai)
Tomobako & otoshi
Hakogaki: Tokkuri hanakago (flower basket, sake bottle-shaped)
and *Chikubōsai saku* (made by Chikubōsai)
Gozame-ami (mat plaiting) & *hishi-ami* (lozenge plaiting)
**Maeda Chikubōsai II (1917-2003) was the third bamboo artist to be
designated “Living National Treasure” in 1992.**



MAEDA CHIKUBŌSAI II (1917-2003)
 Ningen Kokuhō – Living National
 Treasure (1992-2003)
Takasago-i sensu-kazari (fan stand with
 the Takasago bamboo broom and rake
 design)
Susudake (smoked bamboo) and rattan
 54 x 20 x 15 (h) cm (without fan)

Signed: *Chikubōsai zo kore* (made by Chikubōsai)
 Seal: *Chikubōsai*
 Tomobako and furoshiki sealed "Chikubōsai"
 Hakogaki: *Takasago-i sensu-kazari* (fan stand with the Takasago
 bamboo broom and rake design) and *Chikubōsai zo kore*
 with seal *Chikubōsai* (made by Chikubōsai)



MAEDA CHIKUBŌSAI II (1917-2003)
Ningen Kokuhō – Living National
Treasure (1992-2003)
Senjō hanakago (flower basket “One
thousand lines” style)
Madake bamboo and lacquer
13.5 x 13.5 x 27 (h) cm

Signed: Chikubōsai zō (made by Chikubōsai)
Seal: Chikubōsai
Tomobako & otoshi
Hakogaki: *Senjō hanakago* (“One thousand lines” plaiting flower
basket)
Matsuba-ami (pine-needle plaiting) and loose *senjō-ami*
 (“one-thousand-lines” plaiting)



MAEDA CHIKUBŌSAI II (1917-2003)
Ningen Kokuhō – Living National
Treasure (1992-2003)
Tsuzumi hanakago (hand-held drum-
shaped flower basket)
Circa 1960-2000
Susudake (smoked bamboo) & rattan
15.5 x 15.5 x 29.5 (h) cm

Signed: Chikubōsai zo (made by Chikubōsai)
Seal: Chikubōsai
Tomobako & otoshi
Hakogaki: *Tsuzumi hanakago* (A hand-held drum-shaped flower
basket) and *Chikubōsai zo* (made by Chikubōsai)
Senjo-ami (one-thousand-line construction)
Yotsume-ami (square plaiting) & *gozame-ami* (mat plaiting)



MAEDA CHIKUBŌSAI II (1917-2003)
Ningen Kokuhō – Living National
Treasure (1992-2003)
Hanakago (flower basket)
Circa 1960-2000
Susudake (smoked bamboo)
26.2 x 16.3 x 17.2 (h) cm

Signed: *Chikubōsai zo* (made by *Chikubōsai*)
Seal: *Chikubōsai*
Tomobako & otoshi
Yatara-ami (free style plaiting)



MAEDA CHIKUBŌSAI II (1917-2003)
Ningen Kokuhō – Living National
Treasure (1992-2003)
Hanakago (flower basket)
Circa 1960-2000
Madake bamboo, rattan & urushi lacquer
25 x 25 x 24 (h) cm

Signed: Chikubōsai zo (made by Chikubōsai)
Seal: Chikubōsai
Tomobako & otoshi



TANABE CHIKUUNSAI III (1940-2014)
Hanakago (flower basket)
Circa 1980-2010
Madake bamboo, rattan & urushi lacquer
19 x 18 x 15 (h) cm

Signed: *Chikuunsai zo* (made by Chikuunsai)
Seal: *Chikuunsai*
Tomobako & otoshi
Senjo-ami (one-thousand-line construction) and *gozame-ami*
(mat plaiting)



WADA WAICHISAI III (1899-1975)
Fuyo tsuri-hanakago (hanging flower
 basket named “Opulence and glory”)
 Circa. 1950-1960
Susudake Kinmei-chiku (smoked and dwarf
nemagaridake bamboo, *Phyllostachys*
bambusoides - Siebold & Zucc., Castilloni)
 37 x 34 x 38 (h)cm

Signed: Waichisai saku (made by Waichisai)

Seal: Waichisai

Tomobako

Hakogaki: Kinmei susudake, tsuri-hanakago (smoked Kinmei bamboo, a hanging flower basket), entitled *Fuyo** “Opulence and glory” and *Seisetu fūujō-shi* (the studio where rain and wind may manifest merciful blessings in the western Settsu region), Waichisai with seal Waichisai.

Variant of open square plaiting, mat plaiting, twisting and twining

*The shape of the basket resembles *Fuyo* (like Rose Mallow and lotus flowers)



WADA WAICHISAI III (1899-1975)
Tori no su hanakago (flower basket named
“Bird nest”)
Circa 1920-1932
Susudake (smoked bamboo)
28 x 28 x 61.5 (h) cm

Signed: *Issai zo* (made by Issai) *

Seal: *Issai*
Tomobako & otoshi

* before to succeed as Waichisai III in 1933, he was signing Issai.



WADA WAICHISAI III (1899-1975)
Tsubogata hanakago (flower basket
jar-shaped)
Circa 1930-1940
Hōbichiku bamboo & rattan
30 x 28 x 50 (h) cm

Signed: Waichisai
Seal: Waichisai
Tomobako & otoshi
Hakogaki: *Tsubogata hanakago* (flower basket jar-shaped)
and Waichisai



WADA WAICHISAI III

(1899-1975)

Shiro-kamome (flower basket
named “White seagull”)

Circa 1950-1960

Shiratake (white bamboo)

21 x 21 x 67 (h) cm

Signed: *Waichisai saku* (made by Waichisai)

Seal: *Waichisai*

Tomobako & otoshi - Hakogaki: Kengai hanakago (Soaring cliff shaped bamboo basket) and *Mei Shiro-kamome, Seisetu fūjō-shi* (White seagull, the studio where rain and wind may manifest blessings in western Settsu region, Waichisai)

Yotsume-ami (variant of square plaiting)

The tall cylinder shape is poetically called « Soaring Cliff », and this white bamboo basket is aptly entitled White Seagull (Shiro-kamome)

西摂 *Seisetsu* refers to south-eastern parts of modern Hyogo prefecture. Waichisai III's father (Waichisai II) visited Arima Hot Spa to recuperate and taught bamboo crafting there



WADA WAICHISAI III (1899-1975)
Renzan hanakago (flower basket named
“Mountain ranges”)
Circa 1950-1975
Madake and *nemagari-dake* bamboos,
rattan and lacquer
30 x 29 x 45 (h) cm

Signed: *Waichisai zo* (made by *Waichisai*)
Seal: *Waichisai*

Tomobako & otoshi - Hakogaki: Tennendake te teiryō hanakago
(natural bamboo basket with handle) and *Mei Renzan, Seisetu*
fūujō-shi, Waichisai (entitled « Mountain Ranges », the studio where
rain and wind may manifest merciful blessings in western Settsu
region, *Waichisai* with seal *Waichisai*)
Yotsume-ami (variant of square plaiting) and *uroko-ami* (triangular
plaiting)



SUZUKI KYOKUSHOSAI I (1872-1936,
Kanto)
Jyunpū hanakago (flower basket named
“favorable wind”)
Circa 1920-1930
Hōbichiku bamboo, rattan and lacquer
35 x 20 x 42 (h) cm

Signed: *Kyokushosai saku* (made by *Kyokushosai*)
Seal: *Kyokushosai*
Tomobako & otoshi
Hakogaki: *Tekago kaki* (flower basket with handle) and *Jidai take*
hanakago Jyunpū (old bamboo flower basket named
“favorable wind”)
Magaki-ami (true fence plaiting)



MATSUZAWA KAZUYOSHI (1931-2008,
KANTO)

Hiratake hanakago (Flower vase named
"oyster mushroom")

Circa 1990-2008

Ichimai-dake (flat bamboo) and rattan

Tomobako & otoshi

31 x 31 X 42 (h) cm



FUJITSUKA SHŌSEI (1949 -)
Ningen Kokuhō – Living National
Treasure (in 2023)
Take morikago (flower basket named
“Bamboo”)
Dated: 2018
Shirasabi-take (Whitened bamboo)
33 x 21 x 21 (h) cm

Signed: Shōsei saku (made by Shōsei)
Seal: Shōsei
Tomobako & otoshi
Hakogaki: *Take. Shirasabi-take, midare-ami hanakago, Shōsei saku,*
with seal Shōsei (Bamboo. Whitened bamboo, irregular plaiting,
flower basket, made by Shōsei, with seal Shōsei)
Midare-ami (irregular plaiting)



HONMA KAZUAKI (1930 - 2017)
Tsuitate (screen)
ca. 1980-2000
Madake bamboo and wood
120 x 34 x 121(h) cm



HONMA HIDEAKI (1959 -)
Minomushi kakehanaire (hanging flower
basket named Cocoon of bagworm
moth*)
Bamboo
30 x 9 x 30 (h) cm

Signed: *Hide* (of Hideaki)
Seal: *Hideaki*
Tomobako & otoshi
Hakogaki: *Mei Minomushi* (entitled Cocoon of bagworm moth),
Hideaki, with seal *Hideaki*
**Minomushi* (cocoon) of the *Eumeta minuscula* (also known as
Bagworm moth)



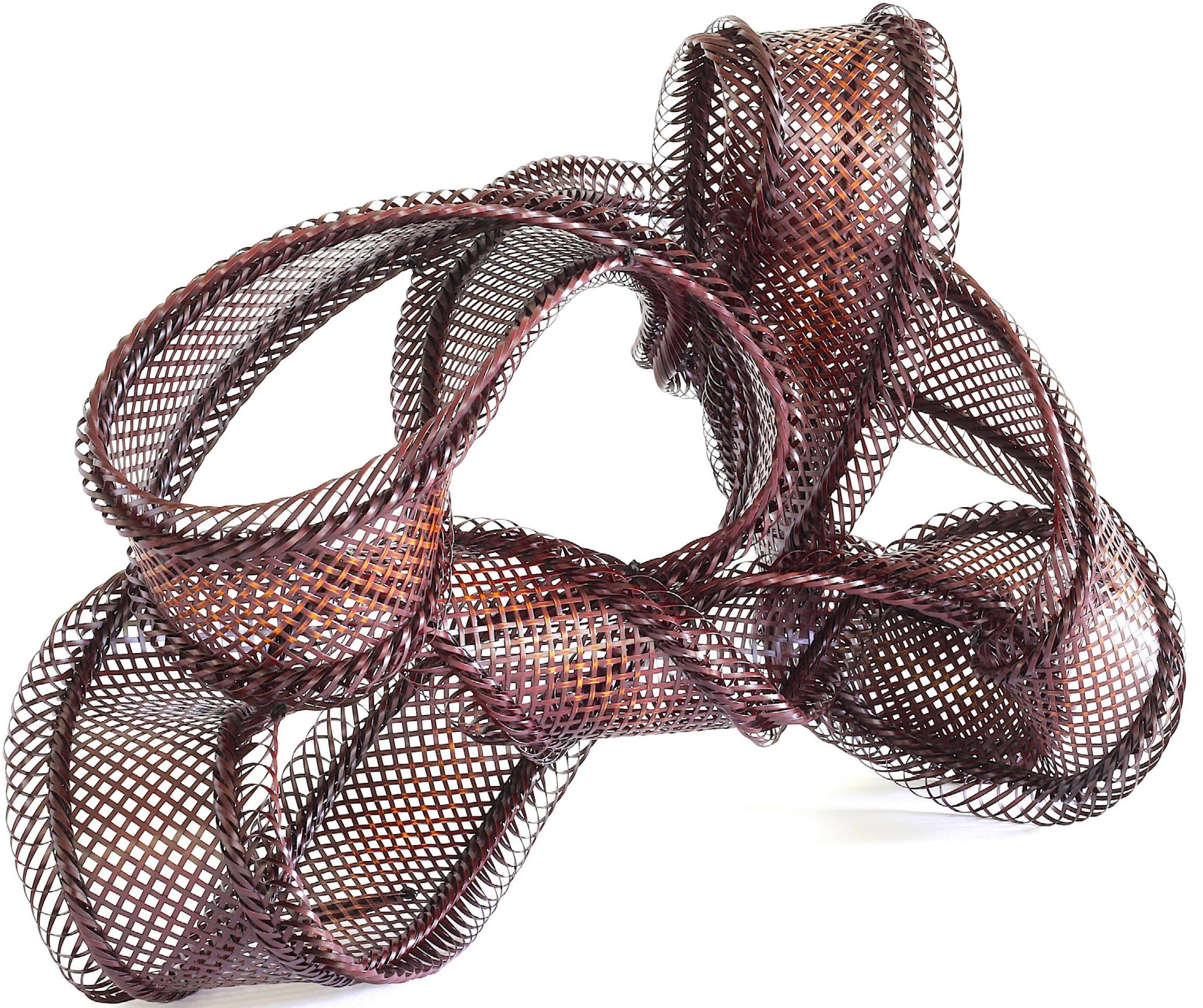
HONMA KOICHI (1993 -)
Ruten (Ever-changing)
Dated: 2022
Bamboo
Tomobako
46 x 37 x 48 (h) cm



TANIGUCHI MICHITO (1988 -)
Hitotoki (A moment)
2019
Madake bamboo, wire & lacquer
Tomobako
54 x 35 x 85 (h) cm



MORIGAMI JIN (1955 -)
Mugen (Infinity)
2014
Madake bamboo & lacquer
100 x 21 x 52 (h) cm



NAKATOMI HAJIME (1974 -)

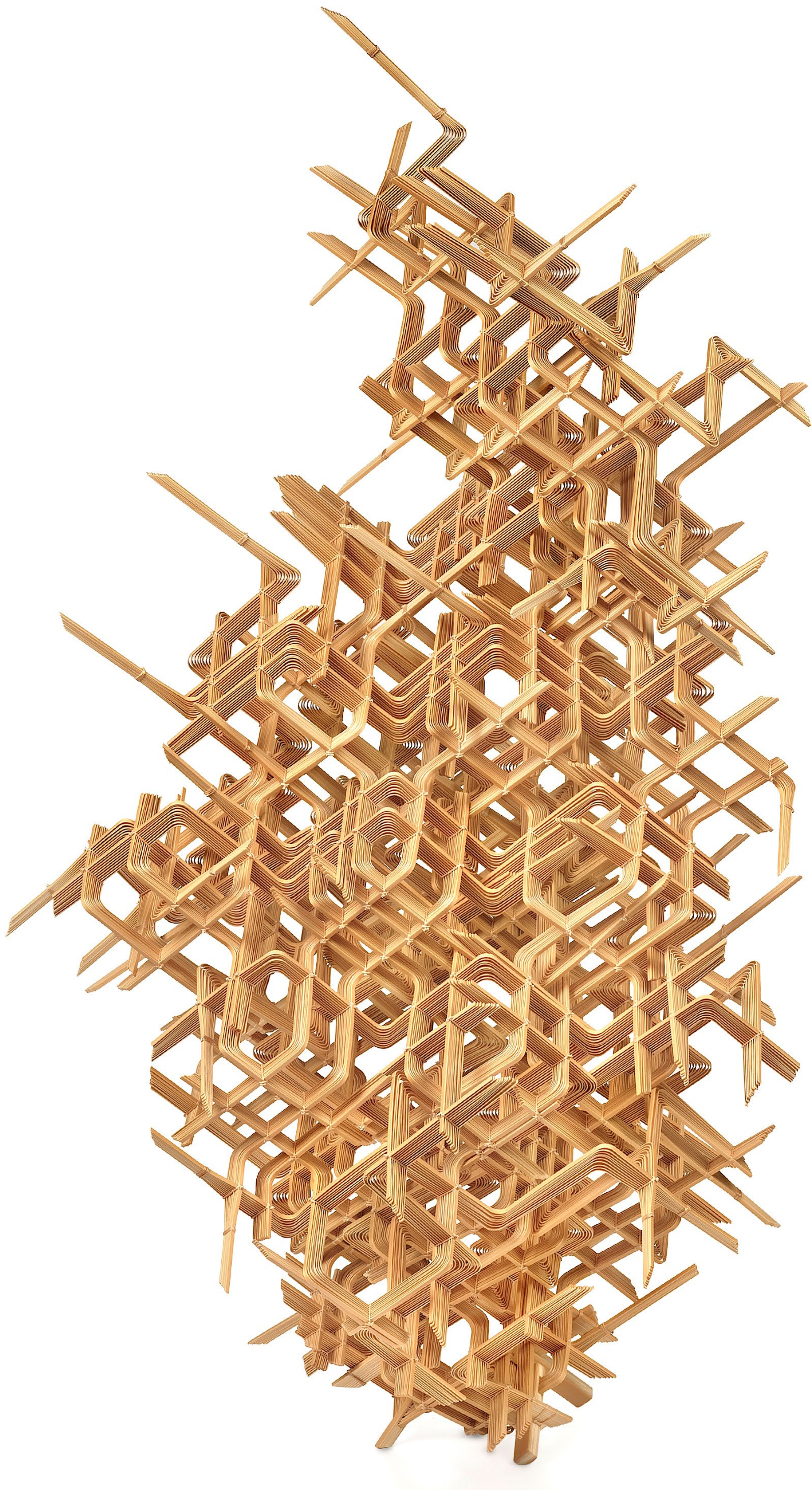
Mugen (Infinity)

2014

Madake bamboo & lacquer

Tomobako

100 x 21 x 52 (h) cm



YOKOYAMA OSAMU (1980 -)

Babylon

2018

Madake bamboo cut, woven and bound

Hakogaki on washi paper

45 x 45 x 83 (h) cm



SHIOTSUKI JYŪRAN (1948-2016)

Rinka hanakago (flower vase
named "Flower")

Circa 1976

Madake bamboo, rattan and lacquer

Tomobako & otoshi

40 (h) x 40 x 40 cm

Exhibited in 1976 at 15th Contemporary Art and Craft Exhibition



SHIOTSUKI JYŪRAN (1948-2016)

Takenoko hanakago (flower vase
named "Bamboo shoot")

Madake bamboo, rattan and lacquer
(*fuki-urushi*)

Dated: 1980

15 x 15 x 25 (h) cm

Signed: *Juran*, 1980

Seal: *Shiotsuki Juko* (Juko (Hisamitsu) is the original given name
of the artist)

Tomobako & otoshi

Hakogaki: Kushime-ami hanakago takenoko (Comb-plaiting flower
basket, in a shape of a young bamboo shoot)

Kushime-ami (comb plaiting)



SUGIURA NORIYOSHI (B. 1964)

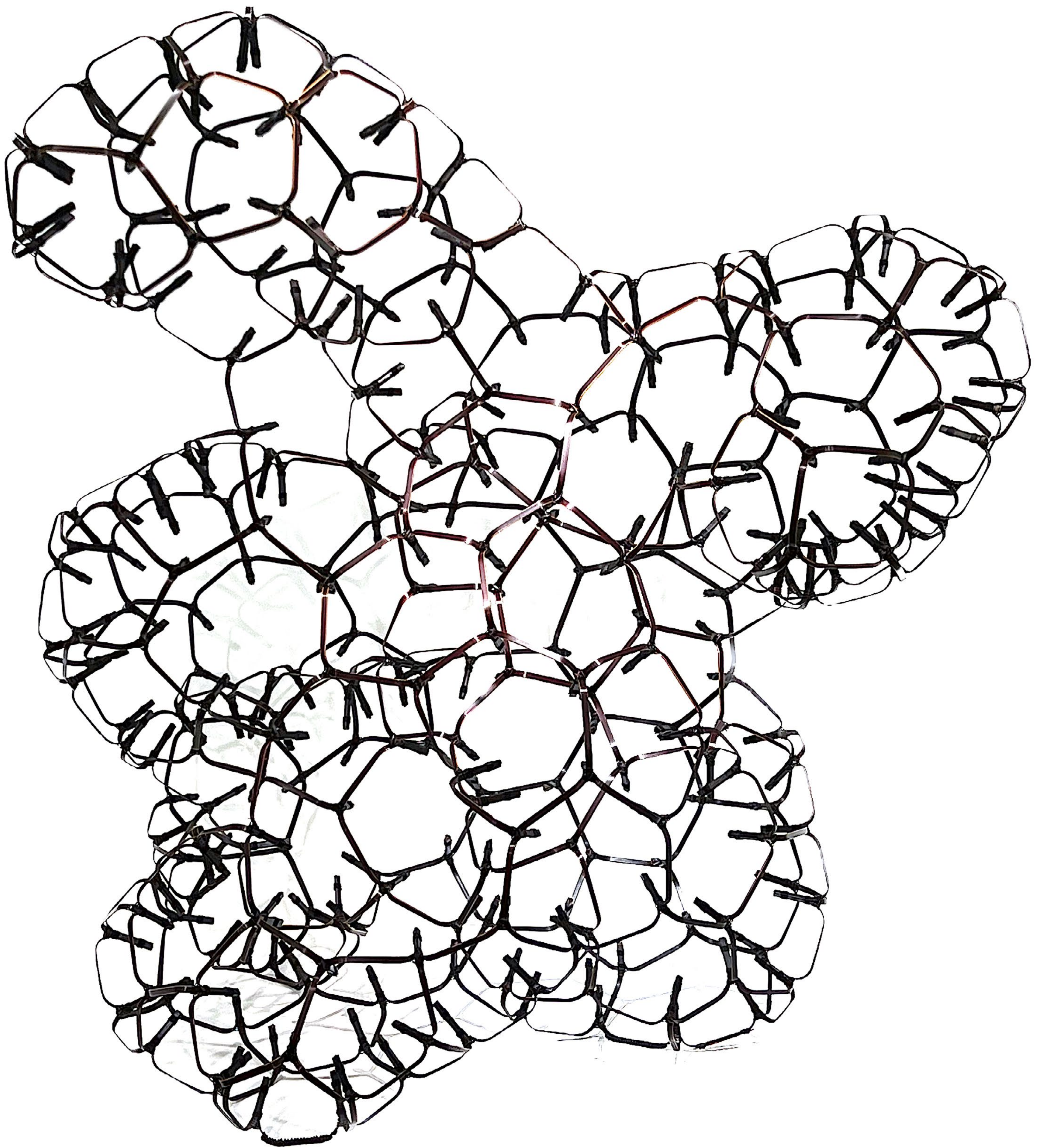
Okimono obu je uneri

Circa 2018

Madake bamboo and lacquer

Tomobako

50 x 32 x 45.5 (h) cm



SUGIURA NORIYOSHI (B. 1964)
Okimono Bubble (large scale structure
of the Cosmos)
Circa 2024
Madake bamboo, cotton and lacquer
Tomobako
55 x 37 x 60 (h) cm



SUGIURA NORIYOSHI (B. 1964)
Okimono Fusion
Circa 2024
Madake bamboo, rattan and lacquer
Tomobako
35 x 35 x 41 (h) cm



YUFU SHOHAKU (B. 1941)
Kogetsu hanakago (flower basket
named "Moon in the lake")
Circa 2022
Madake bamboo, rattan and lacquer
Tomobako & otoshi
58 x 55 x 64 (h) cm



ASO AKARI (B. 1982)
Sumi-e (hanging bamboo sculpture
named "Ink painting")
Circa 2022
Madake bamboo, rattan and lacquer
Tomobako
70 x 9 x 85 (h) cm



ASO AKARI (B. 1982)
Sumi-e (hanging bamboo sculpture
named "Ink painting")
Circa 2022
Madake bamboo, rattan and lacquer
Tomobako
70 x 8 x 84 (h) cm



MINGEI

5-7 rue Visconti
75006 Paris

www.mingei.gallery
mingei.arts.gallery@gmail.com

+33 (0)6 09 76 60 68